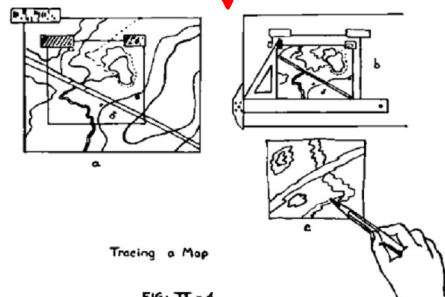




levantamento de campo (topografia)



Caderneta de Campo

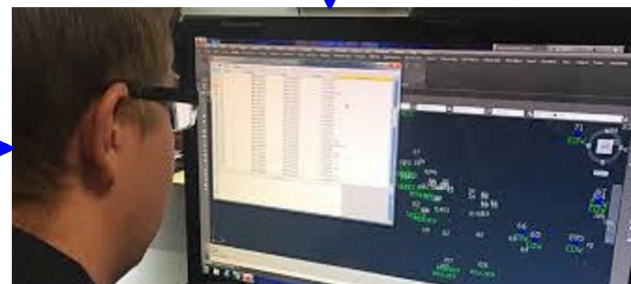
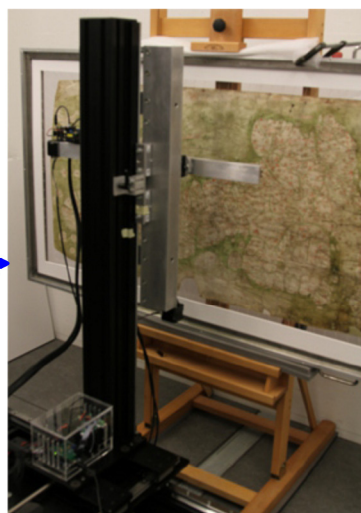


elaboração de mapas

Caderneta digital

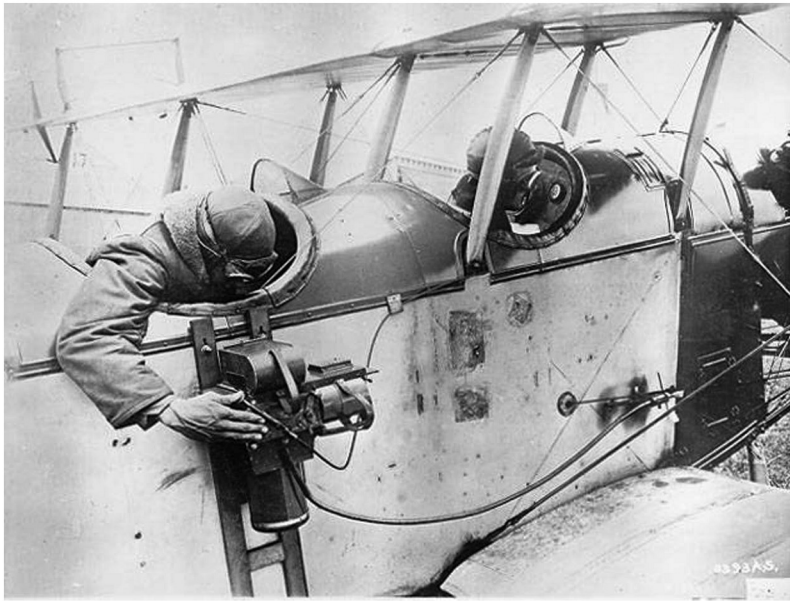
Tracing a Map
FIG. II - 4
Mapa

varredura (scan)

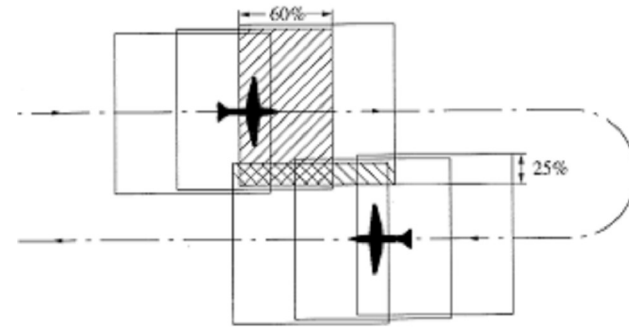


Mapa digital

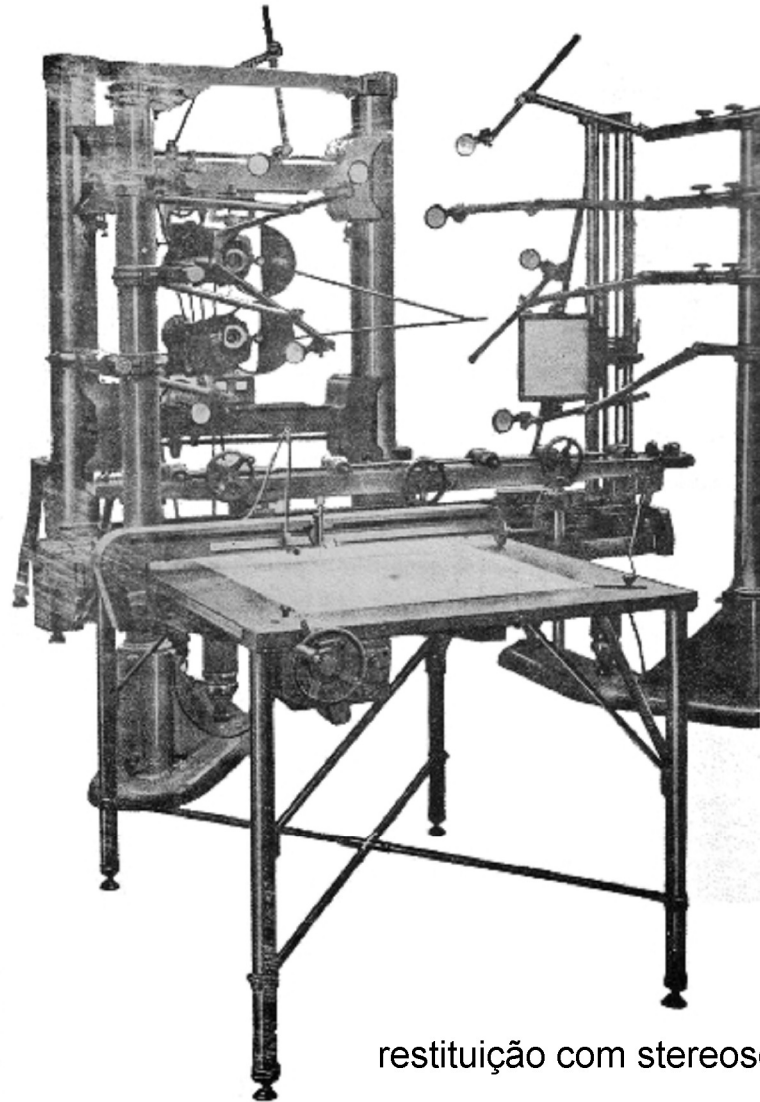
organização e edição



aerofotogrametria



fotografias sobrepostas

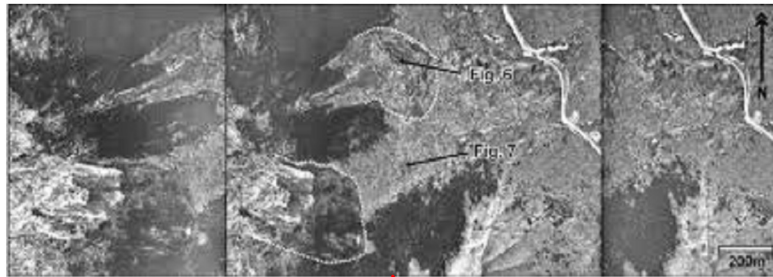


restituição com stereoscopia

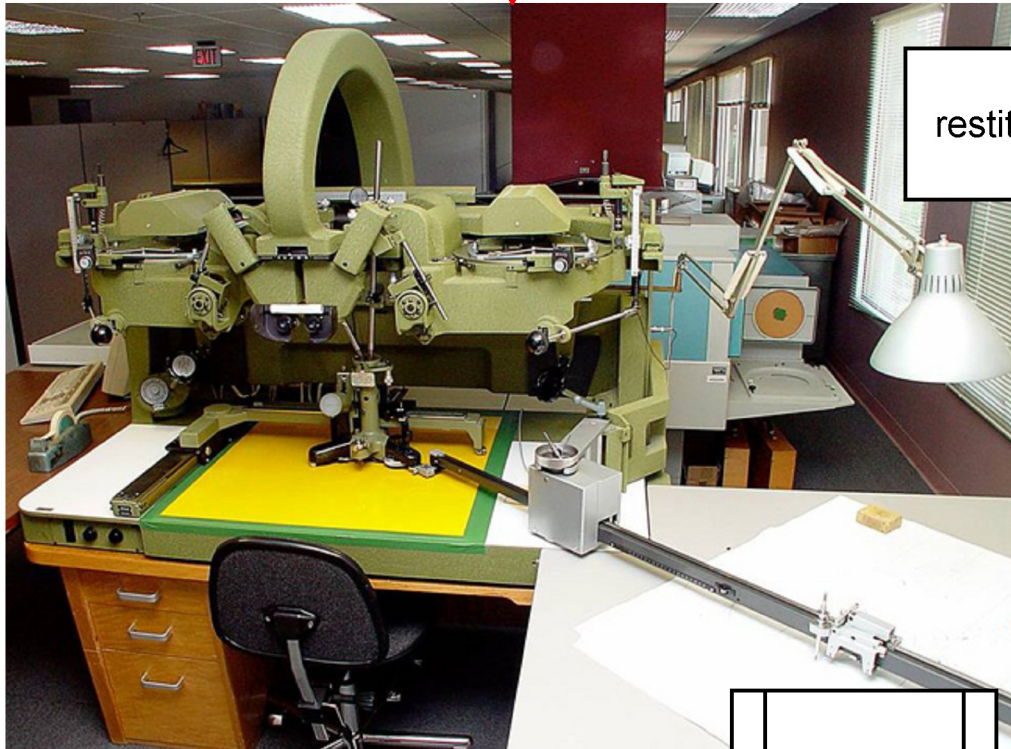


Mapa

filme analógico - revelado e ampliado em fotografias



fotos digitais



restituição



CAD

uso de CAD (1980's)

Mapa digital

ortorretificação de imagens

(2)

Aerofotos

Ortofotos

(2a)

(3)

(1)

MDE

(2b)

Apoio Topográfico

LIDAR

